

Stoddard Silencers, Inc.
 1017 Progress Drive • Grayslake, Illinois 60030
 Telephone (847) 223-8636 • FAX (847) 223-8638
 E-Mail - info @ stoddardsilencersinc.com
 Web page - www.stoddardsilencersinc.com

Application

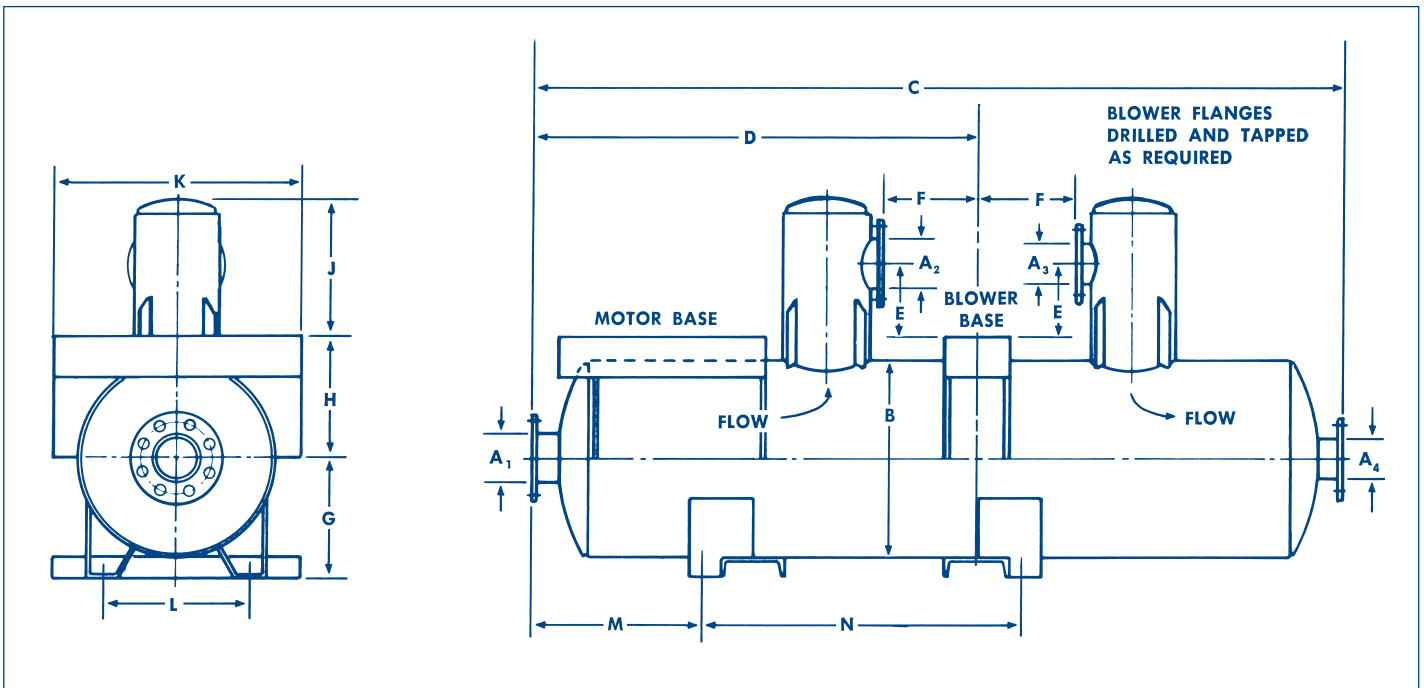
Combination Intake-Discharge Silencer for Rotary Positive Blowers where maximum silencing is required.

Design

A combination intake and discharge silencer which enables the blower and motor to be mounted directly to the top of the horizontal mounted silencer. The silencers are of a multi-chamber design containing a high frequency absorption section in addition to a special arrangement of volumes and air passageways to effectively reduce both pulsations and high frequencies.

Construction

All welded steel and plate construction for long service life. Acoustic material temperature rating shall not exceed 300°F. Intake and discharge flanges are drilled to match 125 ASA flanges. The blower flange connections are drilled and tapped to match blower flanges or flexible connectors. Blower base, motor base, mounting brackets and fork lift channels are included as integral parts of the silencer package. Blower and Motor Slide Rails are not included with silencer bases. Special designs, relief valve connections and drilling of flanges are available upon request.



Model	NOMINAL FLANGE SIZE				B	C	D	E	F	G	H	J	K	L	M	N	WT.
	A ₁	A ₂	A ₃	A ₄													
D93-5-4	5	5	4	4	24	101	55	10	13	15 ¹ / ₄	15	17	30	18	21	40	925
D93-5-5	5	5	5	5	24	101	55	10	13	15 ¹ / ₄	15	17	30	18	21	40	950
D93-6-5	6	6	5	5	24	101	55	10	13	15 ¹ / ₄	15	17	30	18	21	40	975
D93-6-6	6	6	6	6	24	101	55	10	13	15 ¹ / ₄	15	17	30	18	21	40	1000
D93-8-6	8	8	6	6	30	126	68	13	15	18 ¹ / ₄	18	22	36	24	34	40	1600
D93-8-8	8	8	8	8	30	126	68	13	15	18 ¹ / ₄	18	22	36	24	34	40	1650
D93-10-8	10	10	8	8	30	126	68	13	15	18 ¹ / ₄	18	22	36	24	34	40	1675
D93-10-10	10	10	10	10	30	126	68	12	15	18 ¹ / ₄	18	22	36	24	34	40	1700
D93-12-10	12	12	10	10	36	162 ¹ / ₂	75	18	20	21 ¹ / ₄	21	30	42	30	41	40	2800
D93-12-12	12	12	12	12	36	162 ¹ / ₂	75	18	20	21 ¹ / ₄	21	30	42	30	41	40	2850
D93-14-12	14	14	12	12	36	162 ¹ / ₂	75	17	20	21 ¹ / ₄	21	30	42	30	41	40	2900
D93-14-14	14	14	14	14	36	162 ¹ / ₂	75	17	20	21 ¹ / ₄	21	30	42	30	41	40	2950

DIMENSIONS SUBJECT TO CHANGE WITHOUT NOTICE.